

The Nettie J. McKinnon Gallery

Nettie J. McKinnon was a School District 102 principal from 1929-1960. Her students sold magazines to the community at large and used the profits to purchase artwork for Oak Avenue School. She believed that students should have art available to them on a daily basis. *"A great work of art has the power to change everyday experiences into the realm of the mysterious or the beautiful. It is evident that children as art lovers do grow in grace and reverence."* (11/11/57)

When Oak School closed, the art was moved to Ogden Avenue School. In 1978 an arts study group of La Grange women calling themselves "The Friends of Nettie McKinnon" researched the artists in the collection and assisted in opening a gallery in Ogden School where it remained until 2002.

In 2005 District 102 set up a permanent home for the collection in the McKinnon Gallery located in Park Junior High. The SaltCreek American Art Foundation was incorporated to oversee the management, exhibition, care, and education endeavors of the collection.

Currently the collection is comprised of more than 125 works including paintings, sculptures, and decorative art objects. All the artists on display are American, and many are exhibited in major museums across the United States. The Nettie J. McKinnon art collection represents the vision of one educator who understood the importance of art and how it influences the lives of children. Now, a half century later, this art collection not only influences school children but also the public at large.

2016

Mission Statement

The SaltCreek American Art foundation provides educational programs and exhibitions to increase the awareness of American art and its contributions to society. The foundation's goal is to collect and preserve American art for this generation and the next.



SaltCreek American Art Foundation

333 North Park Road, Entrance 4

La Grange Park, Il 60526

708.482.2400 ext. 2002

www.saltcreekart.org

McKINNON GALLERY



Vacation Days - Adam Emory Albright

SALTCREEK
AMERICAN ART FOUNDATION

Preserving American Art for Future Generations

PORTRAITURE

Mrs. Adrian Iselin -
John Singer Sargent



LANDSCAPES OF THE AMERICAN SCENE

Spring Landscape -
John Henry Twachtman



GENRE SCENES

On the Beach - Edward Henry Potthast



The Meadowbrook -
Hugh Bolton Jones

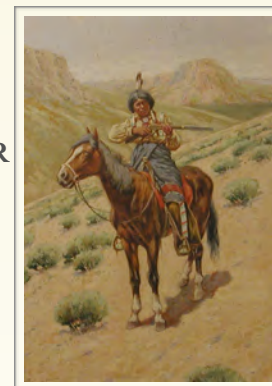


Sand Dune -
Frank V. Dudley

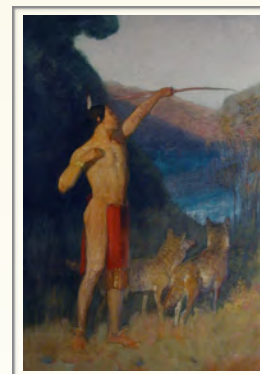


WESTERN FRONTIER

Indian on Horseback -
John Hauser



A Hunter's Offering to the Moon -
Edwin W. Deming



PRINTMAKING

Buster -
Charles William Dahlgreen



Companions - John G. Brown

The Aspen Road -
Joseph Fleck

